

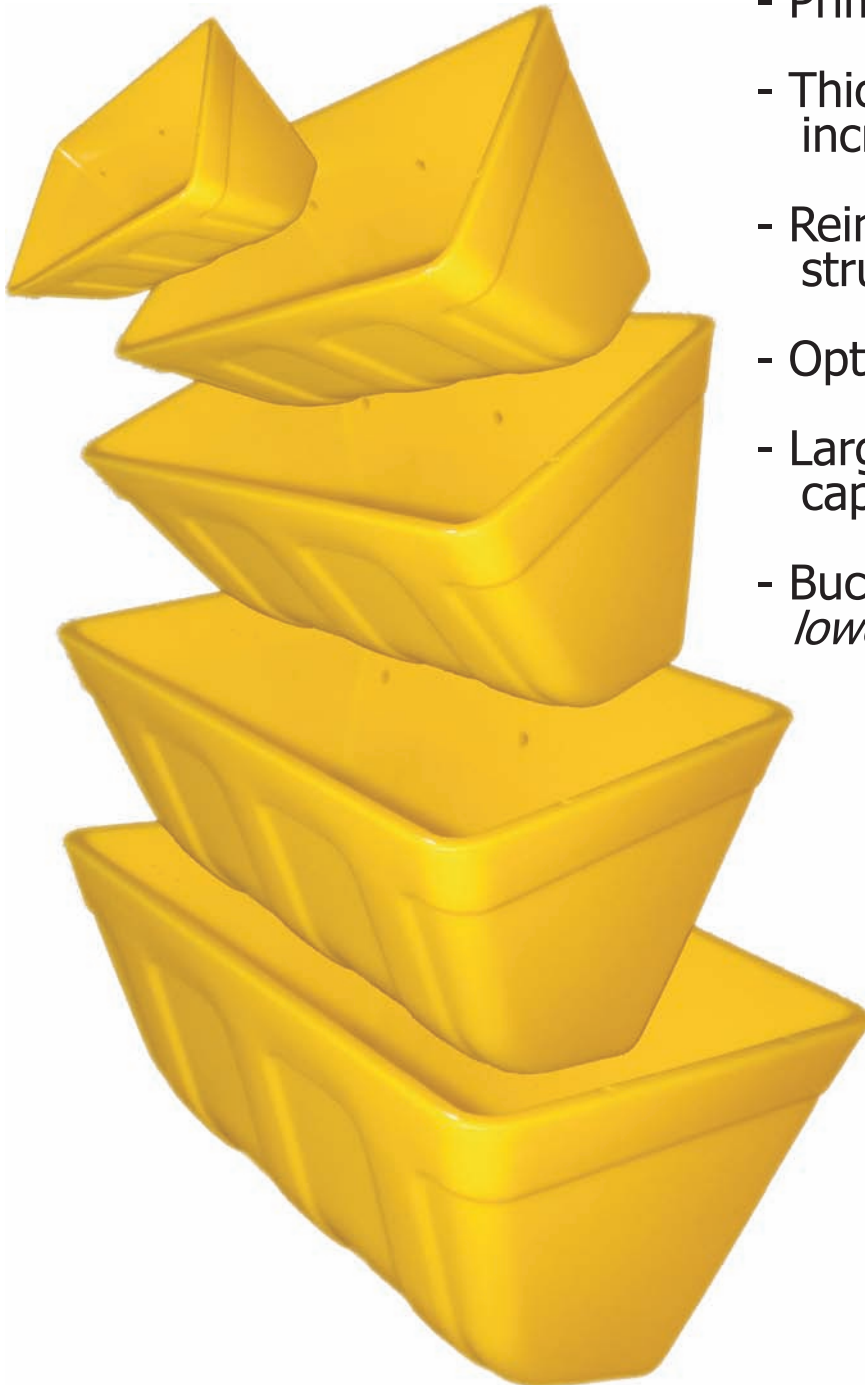


ELEVATOR BUCKETS

YELLOW JACKET SERIES

*Stinger* 

*Simply a Better Bucket™*

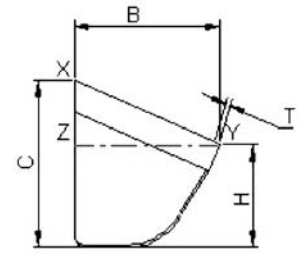
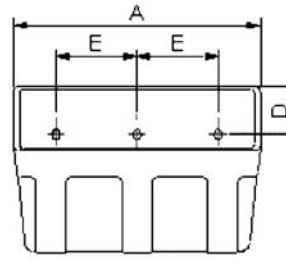


- Prime Virgin HDPE
- Thicker leading edges for increased abrasion resistance
- Reinforcing ribs for greater structural integrity
- Optimum discharge angle
- Larger water level for higher capacities
- Buckets **"NEST"** together for *lower freight costs*



ELEVATOR BUCKETS

YELLOW JACKET SERIES



STYLE "D" BUCKETS (Imperial System)

Model	Dimension-Actual (Inches)					DRILLING - Standard (Inches)				Capacity (Cu. In.)		
	Length (A)	Proj. (B)	Depth (C)	Front Dep. (H)	Thick. (T)	Dist. Down (D)	Ctr to Ctr (E)	# of Holes	Hole Dia.	X-Y	WL + 10% (Z-Y)	WL (Z-Y)
D4X3	4-7/32	3-3/16	3	2	7/32	15/16	2-1/2	2	1/4	19.53	16.79	15.26
D5X4	5-1/4	4-7/16	4-3/16	2-9/16	7/32	1-9/16	3-3/16	2	1/4	50.04	38.94	35.4
D6X4	6-1/4	4-1/4	4-1/16	2-3/4	15/32	1-7/16	4-3/8	2	1/4	55.53	46.99	42.72
D7X4	7-1/4	4-1/4	4-1/16	2-3/4	15/32	1-7/16	2-11/16	3	1/4	65.91	54.92	50.04
D6X5	6-5/16	5-1/2	5-1/8	3-9/64	9/32	2	4-3/8	2	1/4	88.48	72.62	65.91
D7X5	7-5/16	5-1/2	5-1/8	3-9/64	9/32	2	2-11/16	3	1/4	105.57	86.04	78.11
D8X5	8-5/16	5-1/2	5-1/8	3-9/64	9/32	2	3-1/16	3	1/4	122.66	99.47	90.32
D9X5	9-5/16	5-1/2	5-1/8	3-9/64	19/64	2	3-5/8	3	1/4	138.52	112.89	102.52
D11X5	11-3/8	5-1/2	5-1/8	3-9/64	19/64	2	3	4	1/4	144.64	122.67	111.68
D9X6	9-5/16	6-5/8	6-1/16	3-3/4	9/32	2-1/8	3-5/8	3	1/4	200.16	165.98	150.73
D10X6	10-5/16	6-5/8	6-1/16	3-3/4	9/32	2-1/8	4-1/8	3	1/4	223.96	184.90	167.82
D11X6	11-5/16	6-5/8	6-1/16	3-3/4	9/32	2-1/8	3	4	1/4	247.76	203.82	185.51
D12X6	12-5/16	6-5/8	6-1/16	3-3/4	9/32	2-1/8	3-3/8	4	1/4	272.17	223.96	203.82
D14X6	14-3/8	6-5/8	6-1/16	3-3/4	9/32	2-1/8	3	5	1/4	247.78	203.84	185.53
D10X7	10-5/16	7-3/4	7-3/32	4-1/2	3/8	2-5/16	4-1/8	3	5/16	298.43	246.56	252.66
D11X7	11-5/16	7-3/4	7-3/32	4-1/2	3/8	2-5/16	3	4	5/16	333.80	277.66	252.64
D12X7	12-7/16	7-3/4	7-3/32	4-1/2	3/8	2-5/16	3-3/8	4	5/16	371.63	308.78	280.71
D13X7	13-1/2	7-3/4	7-3/32	4-1/2	3/8	2	3-5/8	4	5/16	405.20	364.92	331.97
D14X7	14-7/16	7-3/4	7-3/32	4-1/2	3/8	2-5/16	3	5	5/16	438.15	363.70	330.75
D15X7	15-7/16	7-3/4	7-3/32	5	3/8	2	3-1/4	5	5/16	469.27	421.67	383.23
D16X7	16-7/16	7-3/4	7-3/32	5	3/8	2	2-7/8	6	5/16	502.83	477.82	409.47
D12X8	12-7/16	8-3/4	8-1/8	5-5/8	7/16	2-5/16	3-3/8	4	5/16	499.78	417.40	379.57
D14X8	14-1/2	8-3/4	8-1/8	5-5/8	7/16	2-5/16	3	5	5/16	551.65	494.90	449.74
D16X8	16-9/16	8-3/4	8-1/8	5-5/8	7/16	2-5/16	2-7/8	6	5/16	638.30	570.57	518.70
D18X8	16-5/8	8-3/4	8-1/8	5-5/8	7/16	2-5/16	3-1/8	6	5/16	727.40	648.07	588.87
D20X8	20-1/2	225	210	150	7/16	2-3/16	3-1/2	6	5/16	834.80	743.08	675.53

STYLE "D" BUCKETS (Metric)

Model	Dimension-Actual (mm)					DRILLING - Standard (mm)				Capacity (L)		
	Length (A)	Proj. (B)	Depth (C)	Front Dep. (H)	Thick. (T)	Dist. Down (D)	Ctr to Ctr (E)	# of Holes	Hole Dia.	X-Y	WL + 10% (Z-Y)	WL (Z-Y)
D4X3	107	81	75	51	5.5	24	64	2	6.5	0.32	0.28	0.25
D5X4	133	113	106	65	5.5	40	64	2	6.5	0.82	0.64	0.58
D6X4	159	108	103	67	6	36	80	2	6.5	0.91	0.77	0.7
D7X4	184	108	103	67	6	36	68	3	6.5	1.08	0.90	0.82
D6X5	160	140	130	80	7	50	110	2	6.5	1.45	1.19	1.08
D7X5	186	140	130	80	7	50	68	3	6.5	1.73	1.41	1.28
D8X5	211	140	130	80	7	50	78	3	6.5	2.01	1.63	1.48
D9X5	237	140	130	80	7.5	50	92	3	6.5	2.27	1.85	1.68
D11X5	289	140	130	80	7.5	50	76	4	6.5	2.37	2.01	1.83
D9X6	237	168	154	95	7	54	92	3	6.5	3.28	2.72	2.47
D10X6	262	168	154	95	7	54	105	3	6.5	3.67	3.03	2.75
D11X6	287	168	154	95	7	54	76	4	6.5	4.06	3.34	3.04
D12X6	313	168	154	95	7	54	86	4	6.5	4.46	3.67	3.34
D14X6	365	168	154	95	7	54	76.2	5	6.5	5.08	4.20	3.82
D10X7	262	197	180	114	9.5	58	105	3	8	4.89	4.04	3.67
D11X7	287	197	180	114	9.5	58	76	4	8.5	5.47	4.55	4.14
D12X7	316	197	180	114	9.5	58	86	4	8.5	6.09	5.06	4.60
D13X7	343	197	180	127	9.5	50	92	4	8.5	6.64	5.98	5.44
D14X7	367	197	180	114	9.5	58	76	5	8.5	7.18	5.96	5.42
D15X7	392	197	180	127	9.5	50	82	5	8.5	7.69	6.91	6.28
D16X7	417	197	180	127	9.5	50	73	6	8.5	8.24	7.38	6.71
D12X8	315	222	206	143	11	58	86	4	8.5	8.19	6.84	6.22
D14X8	368	222	206	143	11	58	76	5	8.5	9.04	8.11	7.37
D16X8	420	222	206	143	11	58	73	6	8.5	10.46	9.35	8.5
D18X8	473	222	206	143	11	58	80	6	8.5	11.92	10.62	9.65
D20X8	520	225	210	150	11	55	89	6	8.5	13.68	12.18	11.07

Contact your local Ringball branch for additional sizes